

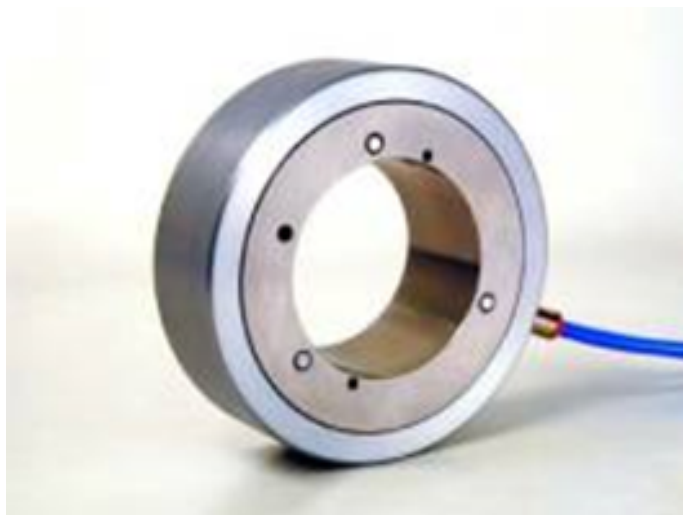


Standard measuring instruments

TQM Itaca Technology is able to provide all the necessary for the pneumatic measure.



Pneumatic buffers from 1 mm to 200 mm of diameter.



Pneumatic rings, from 1,50 mm to 200 mm of diameter.



TECHNOLOGY
TQMitaca

I N T E G R A T E D S O L U T I O N S F O R M E A S U R I N G

Standard measuring instruments



Calibration rings and calibration buffers complete with test report or Accredia/SIT certification

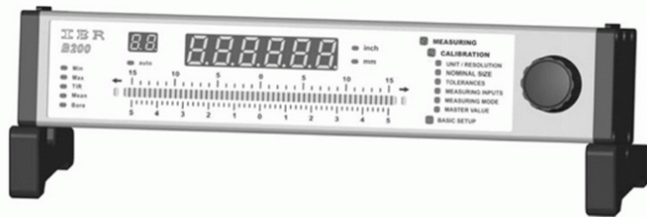


TECHNOLOGY
TQMitaca

INTEGRATED SOLUTIONS FOR MEASURING

Standard measuring instruments

ACCESSORIES



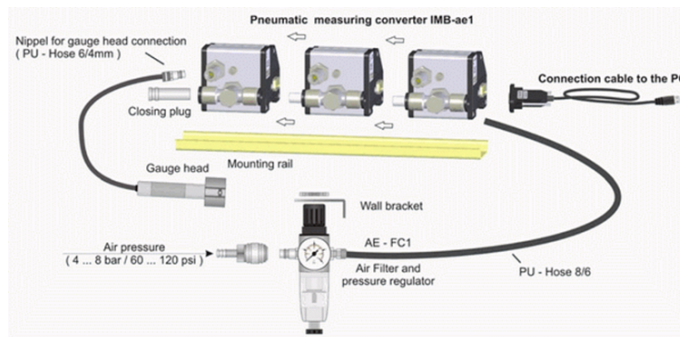
Columns and measuring boxes, available in the versions:

Multi-instrument

Static measure

Dynamic measure (Max, Min, TIR, average)

Class selections



Pneumo-electronic converter, for the connection by usb of the SPC-Itastat 6 Measure stations, for the visualization of the control charts, the save of the measurements, the printing of the reports, etc...

ELECTRONIC MEASURE AND ANALOG PROBES

TQM Itaca Technology provides its gauges with customized HBT analog probes. Our probes are available also as single articles with competitive prices.

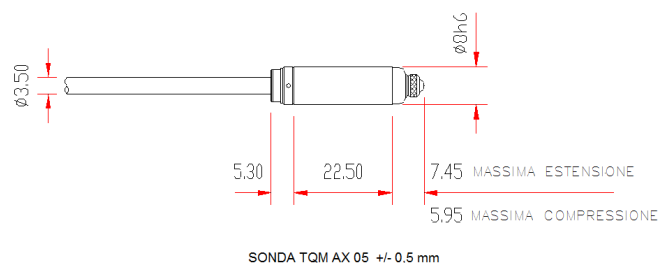
Here below some of the most used models (other models available):



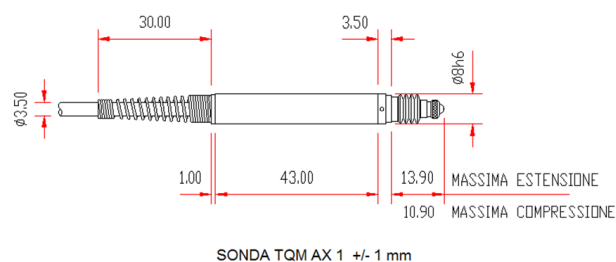
TECHNOLOGY
TQMitaca

I N T E G R A T E D S O L U T I O N S F O R M E A S U R I N G

Standard measuring instruments



AX/0.5: measuring field +/- 0,5 mm



AX/1: measuring field +/- 1 mm. Also available with cable exit at 90° and with pneumatic retraction.

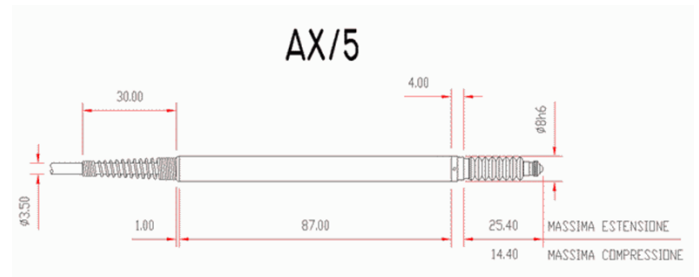




TECHNOLOGY
TQM Itaca

I N T E G R A T E D S O L U T I O N S F O R M E A S U R I N G

Standard measuring instruments



AX/5: measuring field +/- 5 mm. Also available with cable exit at 90° and with pneumatic retraction.

Interfaces for the connection of SPC Itastat 6 Measure stations

There are available different types of interfaces for the connection of analog probes to the Itastat 6 Measure stations. The choice of the interface depends on the measuring needs. For static measures, with gauges with manual loading/unloading, and characteristics with wide tolerances, the interfaces with the connection by usb can be adequate. For dynamic measures, automatic gauges with loading/unloading made by a robot or by a manipulator, many probes and restricted tolerances it's advisable to use the interface [iDaq4Geo](http://www.tqmitaca.com/idaq4geo)